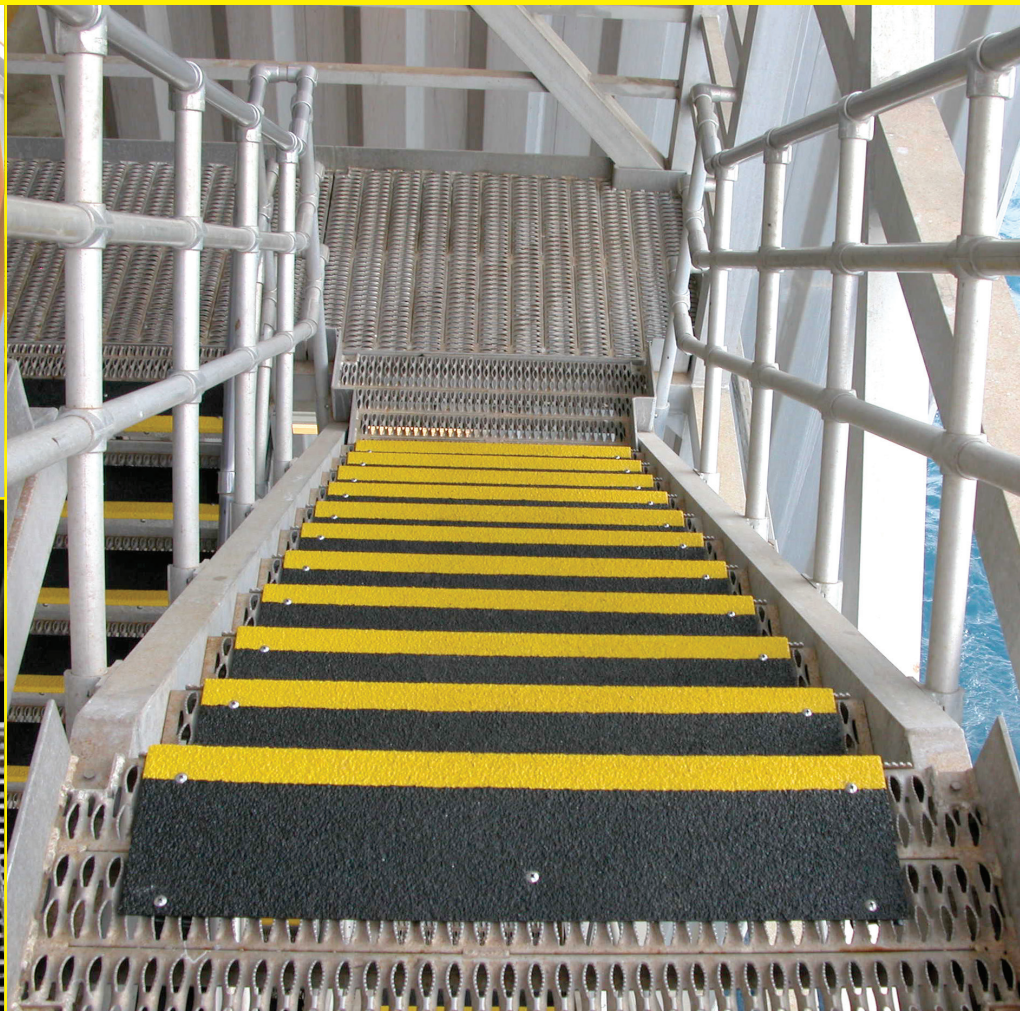


Anti-Slip Hi-Traction® STEP COVERS

SAFEGUARD
TECHNOLOGY
Leading Manufacturer of Anti-Slip Safety Products



**Safeguard® Hi-Traction® and HiGlo-Traction®
Step Covers offer a superior alternative to temporary
paints and tapes.**

Designed with a long-lasting, aggressive gritted surface, our products are proven to provide Anti-Slip protection in a variety of environments. The " — " shaped design wraps over the leading edge of your step to provide Anti-Slip protection where it is needed most.



www.safeguard-technology.com

Step Covers | Walkway Covers | Ladder Rung Covers | Pipe & Cable Covers | Roll-Traction® | Anti-Slip Mats | Anti-Slip Tapes

Anti-Slip Hi-Traction® STEP COVERS

SAFEGUARD® Hi-Traction® and HiGlo-Traction® Step Covers
Safely leading the way to eliminate costly slips-and-falls.

Design

Most slips occur on the leading edge of the stair step, especially when the metal, wood or concrete surface becomes worn or rounded. Water, dust, or oil on the step further accentuates the problem. SAFEGUARD® Hi-Traction® Step Covers are designed to cover the leading edge, providing excellent traction, even in adverse conditions.

Coefficient of Friction

Safeguard Technology's unique surface nearly doubles both the OSHA's 0.5 and the ADA's 0.6 guidelines for Coefficient of Friction values as confirmed in independent lab testing using the Mark II Model of the Brungraber slip tester. Even in wet or oily conditions, our Safety Covers greatly exceed these guidelines.

Six Sizes of Grit

Safeguard offers six sizes of grit. Super Coarse and Extra Coarse have become the industry standards for the Oil & Gas exploration industry. For less harsh environments such as crews quarters, shower and locker room facilities, fine grades are available.

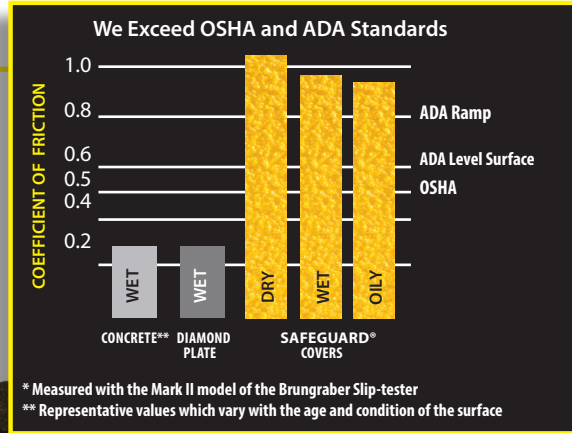


Choose Your Colors

Select from a wide range of standard, premium, or custom colors. Please refer to our Standard and Premium Colors literature page.

Glow-in-the-Dark

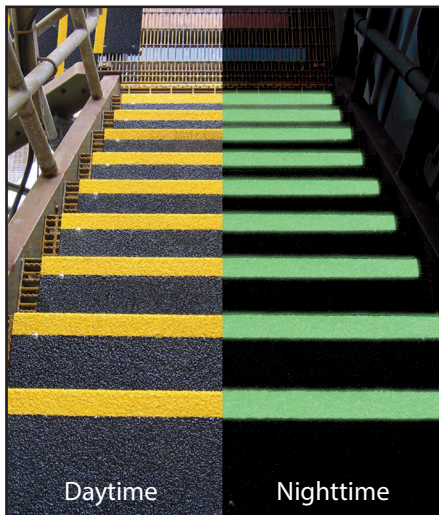
Safeguard also offers HiGlo-Traction® Covers in photoluminescent which are visible for 12-20 hours after the light source is removed.



*Safeguard incorporates Fused Alumina as the aggregate in it's Antislip surface. This abrasive is characterized by a sharp edged particle shape and measures (9.0) on the Mohs' Hardness Scale for abrasives. This ranks just below Diamond (10). Comparatively, most tapes and paints incorporate quartz or silica, which are synonyms for sand, as the aggregate. These only rank in the 6-7 range on the scale.

Two-Tone Colors Add Visibility

For added safety, our two-tone step Covers call attention to the edge of the step. A contrast between the step edge and the back of the tread below provides good definition and clear visibility. For step depths greater than 3 inches, we strongly recommend using our two-tone color configuration.



Descriptive Messaging and Logos

Safeguard was the first to incorporate Safety Messaging & Personal Protection Equipment (PPE) Symbols on our complete line of Hi-Traction® Covers. Reinforce safety with universally recognized symbols, thus eliminating language barriers. Safeguard also offers corporate logos to enhance branding and reaffirm safety compliance programs.

Easy Installation and Cleaning

Safeguard® Hi-Traction® and HiGlo-Traction® Covers are not load bearing. They are prefabricated, retrofit Covers which are quickly and easily installed over existing surfaces, such as concrete, wood, metal plate and grating using mechanical fasteners, adhesive or tack welding. Installation is quick, easy and requires little to no downtime. Cleanup is easy with a non-solvent cleaner and a stiff brush. Refer to our cleaning and installation insert for complete details.

Physical Properties

Please refer to our General Properties Insert for complete physical properties and mechanical specifications.

Contact Safeguard Technology for more information or a free sample today.

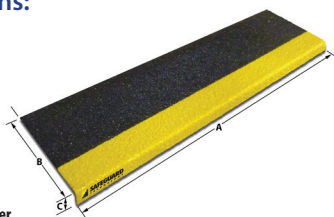


SAFEGUARD TECHNOLOGY INC.
330.995.5200 | 800.989.1695 Toll-Free in the U.S. and Canada
Email: info@safeguard-technology.com
www.safeguard-technology.com

© Copyright 2016 SAFEGUARD TECHNOLOGY INC.
SAFEGUARD® Covers, Hi-Traction®, HiGlo-Traction®, and Roll-Traction® are registered trademarks of SAFEGUARD Technology Inc. REV3_122115

Shape Options:

- Standard 90° Lip
- Bull Nose Radius
- Custom Fabricated Spacer
- Raised Rounded Nosing
- Back Beveled Edge



STEPS ONLY - Vertical lip wraps over leading edge of stairs where most slips and falls occur.

Base Materials

- 1/8"
- 18 gauge (1.2mm) G90 Galvanized Steel
- 18 gauge (1.2mm) #316 Stainless Steel

Sizing [Custom sizes available]

- FRP Covers**
- Up to 10' in length & 15" deep
 - Standard 1" vertical lip

- Steel Covers**
- Call for maximum capabilities

